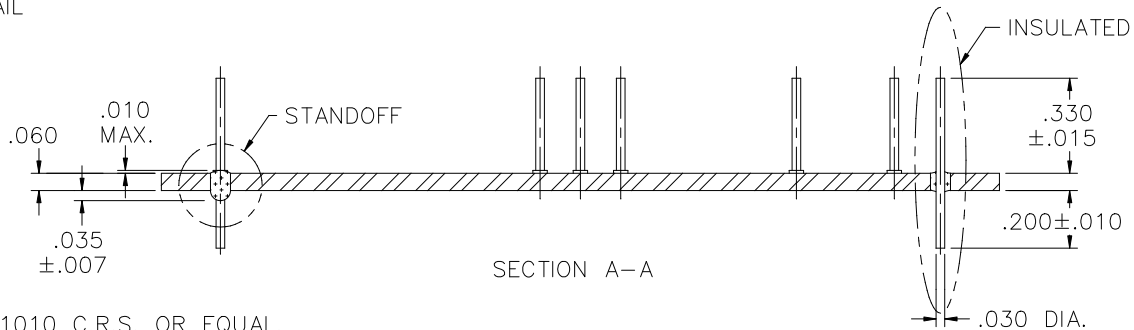
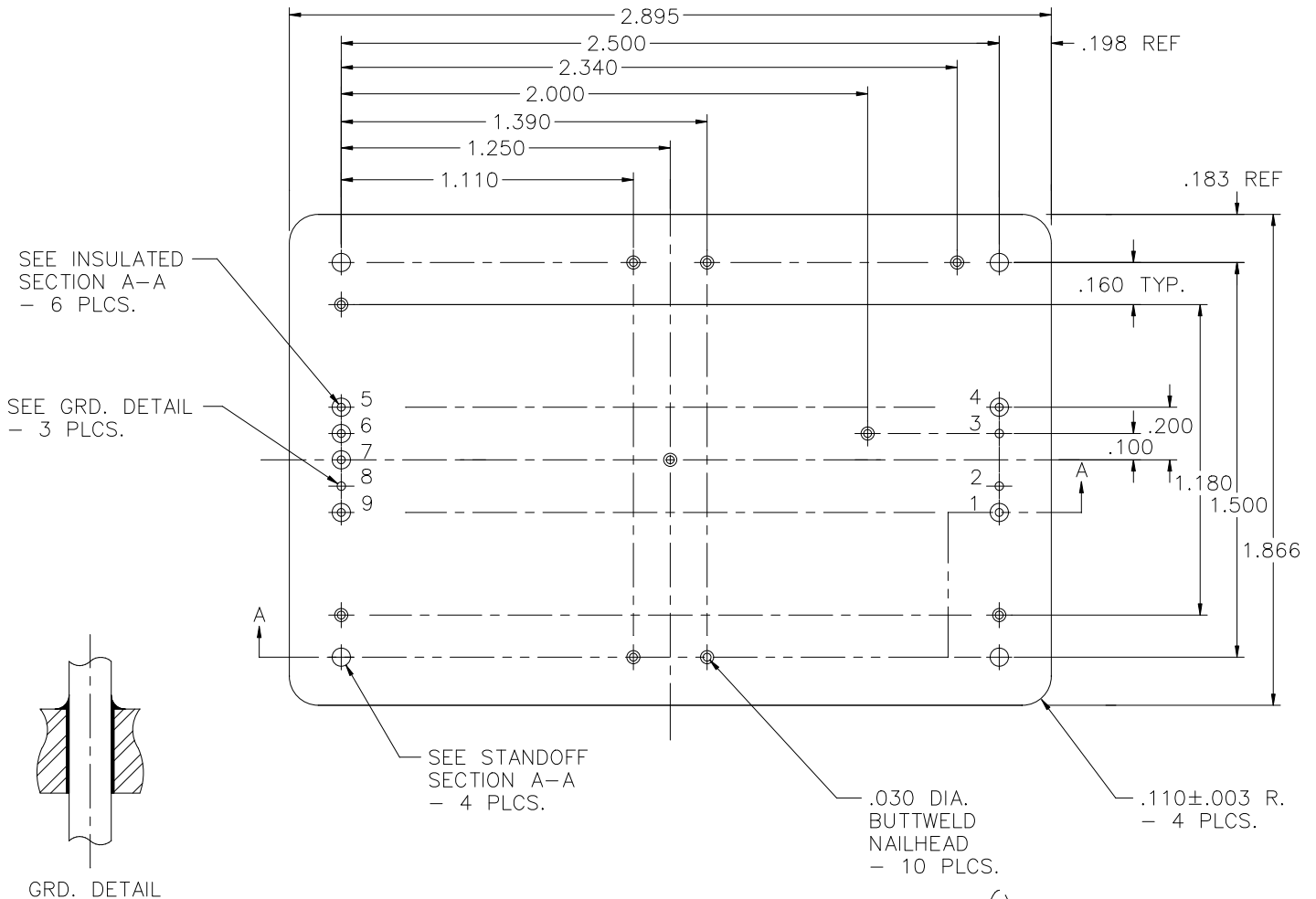


REV	DESCRIPTION OF REVISION	E.C.N.	BY	APPROVED	DATE
-----	-------------------------	--------	----	----------	------




MATERIAL:

- EYELET- 1010 C.R.S. OR EQUAL.
- GLASS - 9013 OR EQUAL.
- LEADS - ASTM F-30, 52 ALLOY.
- BRAZE - BT VTG AG. CU. EUTECTIC.

PLATING:

1. PLATE EYELET PRIOR TO FUSING WITH ELECTROLYTIC NICKEL. AFTER FUSING PLATE WITH RoHS COMPLIANT ELECTROLESS NICKEL PLATE OF 100 MICROINCHES MINIMUM FOLLOWED BY 100 TO 350 MICROINCHES OF ELECTROLYTIC SOLDER (60% TIN & 40% LEAD) PER MIL-P-81728.

DRAWN BY: E.T.W. 10-22-00	MATERIAL: SEE ABOVE			TOLERANCING PER ANSI Y14.5 .X ±.005 .XXX ±.005 .XX ±.005 ANG ±5° UNLESS OTHERWISE SPECIFIED		 6700 W. 47th TERR. MISSION, KS. 66203 TEL: 913-432-2487 FAX: 913-432-0570
	CHECKED BY:	APP. SPECS A3728 REV. E REFERENCE	SUPERSEDES	NEXT ASSY	SCALE: N.T.S.	
APPROVED BY:	TITLE: 1.866 x 2.895 D.I.P.				PART NUMBER: DC-1866-2895-A T16	
					FILE: WA00002	PAGE 1 of 1